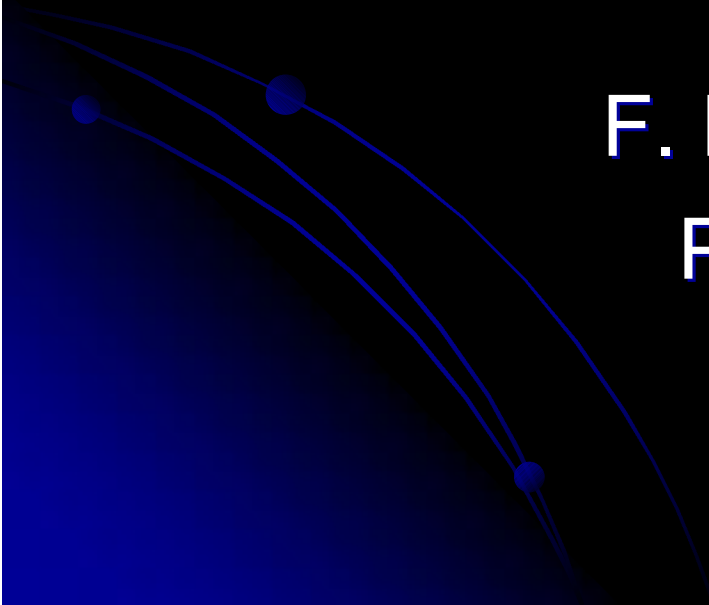


**The Healing Hillside**

**Windber Medical Center  
Windber Research Institute**

**F. Nicholas Jacobs  
President/CEO**





# Planetree

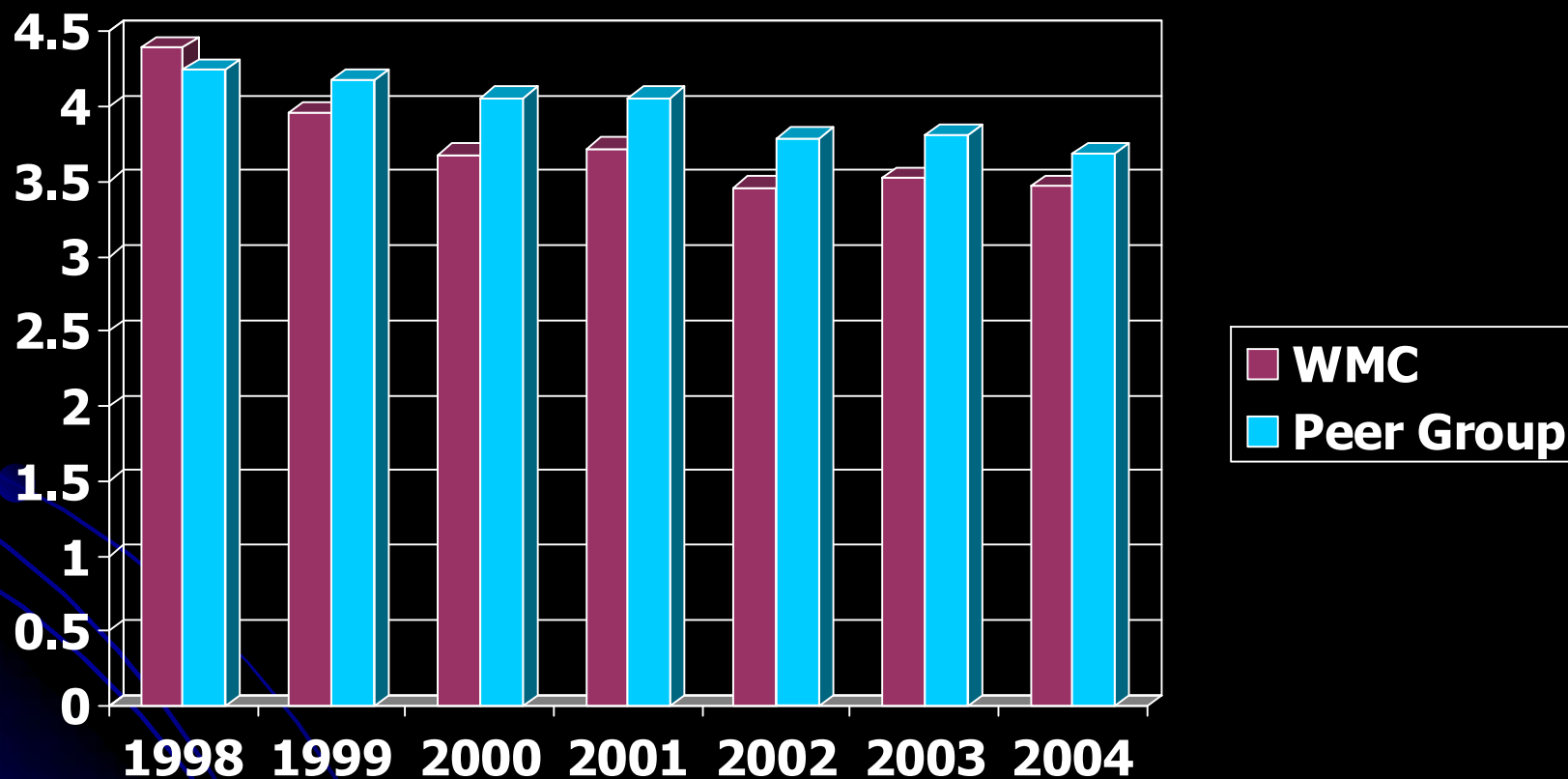
**Planetree embraces the concept that the mind and body are intricately interrelated and that healing must address the needs of the mind and spirit as well as the body. All facets of the Planetree model - open communication, patient choices, family/friend involvement, music, art, massage, architecture, use of complementary therapies, and others - work to uphold this concept.**

# Employee Training & Development

- **Disney Training for ALL employees**
- **EQ2/Emotional Quotient Training**
- **Planetree Training Team**
- **Dale Carnegie Training Program**

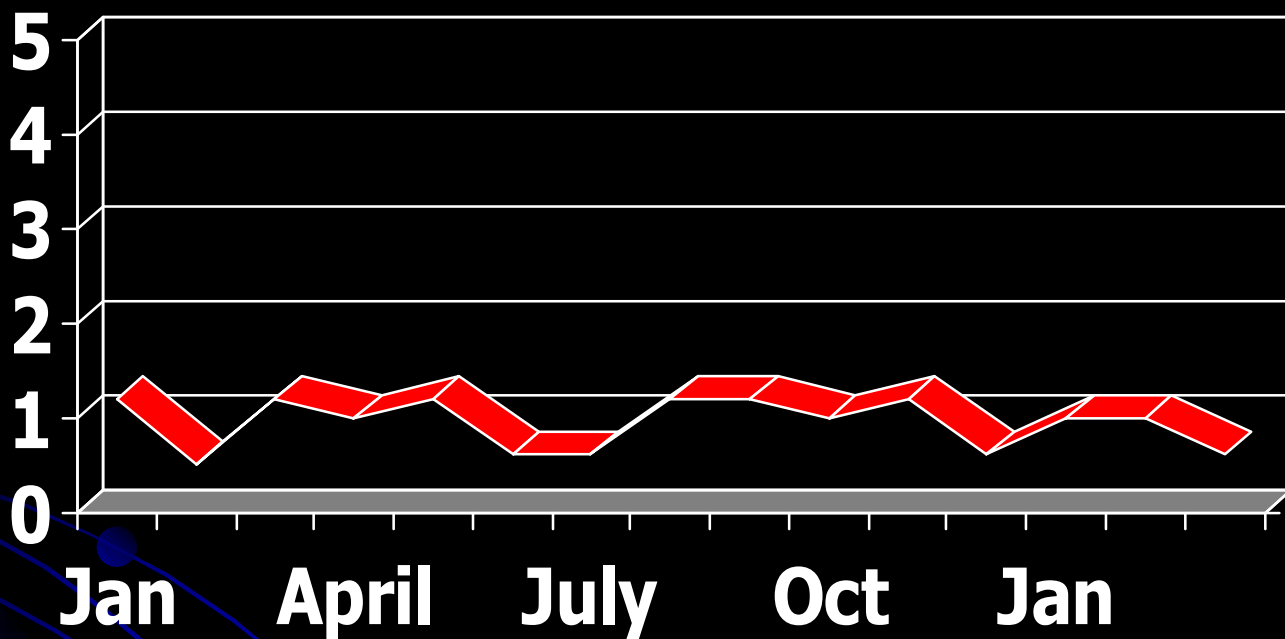


# Average Length of Stay



Source: The Hospital Council of Western PA

# Hospital-wide Nosocomial Infection Rate



**2004-2005**

**Average rate for 2004-2005 - 0.96**

**Below 1%**

# State-of-the-Art Equipment



# DONNA SHALALA

U.S Secretary of Health & Human Services



**“Close your eyes if you want to see health care in the future. Then open them, and see the extraordinary facility here at Windber. This is the future of health care, it focuses on prevention and research. Keeping people healthy and focusing on end of life.”**



# Windber Medical Center

Member Conemaugh Health System